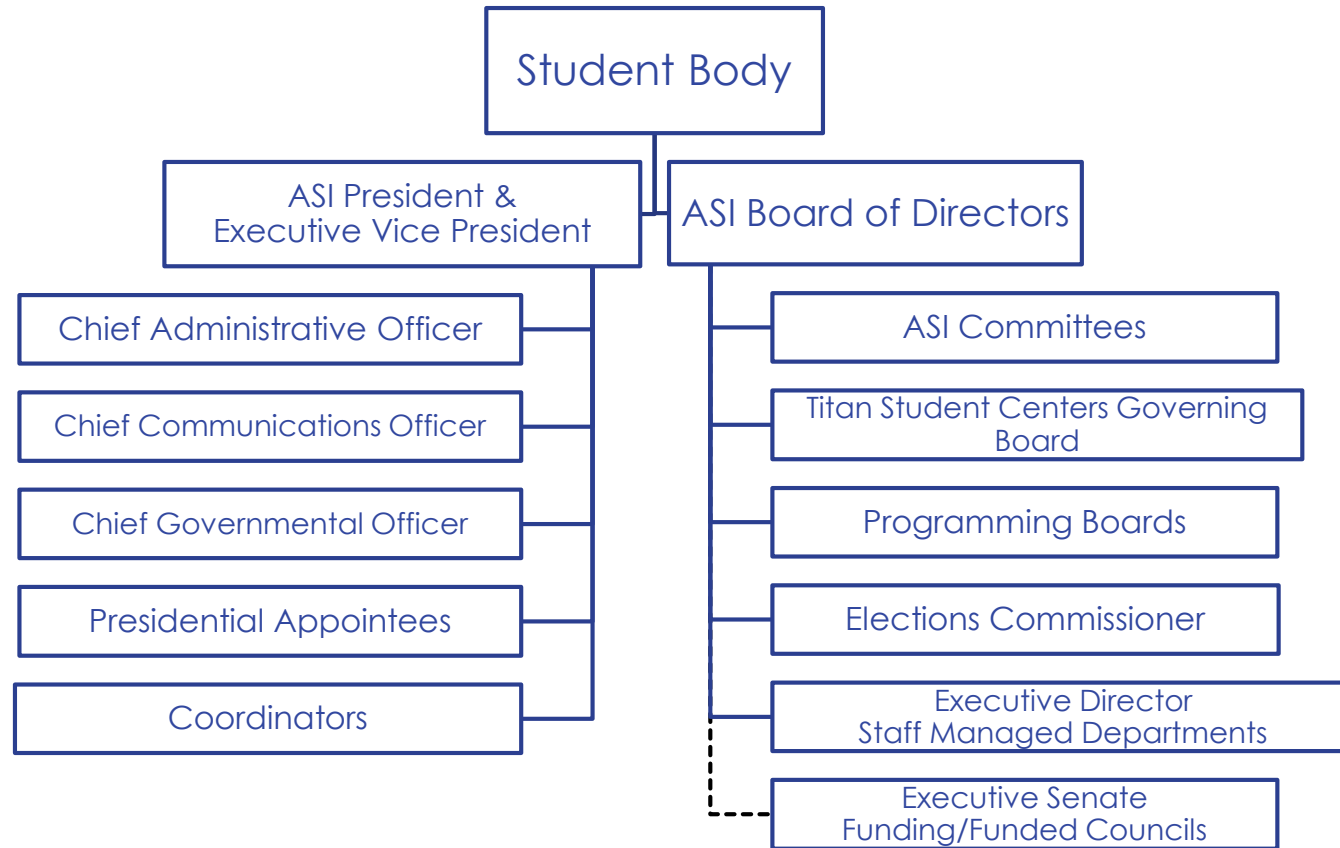




ASI Board of Directors

2016-2017

ASI Organization Chart



What does BOD do?

- ▶ The ASI Board of Directors consists of two representatives from each of the eight academic colleges on campus.
- ▶ These board members are **advocates** on behalf of the students of Cal State Fullerton within the University community.
- ▶ As a whole the Board is charged with setting **policy** for the Associated Students, Inc. (ASI), and approves all **funding allocations** to programs and services.
- ▶ At the first meeting of the year, the 16 Directors vote to elect a Board Chair, in addition to two Vice Chairs.
 - ▶ Vice Chairs: Secretary (chair of governance committee) Treasurer (chair of finance committee)

Let's break that down

- ▶ Advocating
 - ▶ Meeting with College Deans
 - ▶ Meeting with students
 - ▶ Resolutions
- ▶ Policy
 - ▶ Our bylaws and policies are all online
- ▶ Allocation of Funding
 - ▶ Accepts a budget each year
 - ▶ Contingency requests and approves contracts over \$5,000

Weekly commitments

- ▶ ASI BOD Meetings
 - ▶ Tuesdays 1:15-3:45 PM
- ▶ One additional meeting
 - ▶ Chosen by the Chair and made to fit with your schedule (one to two hour commitment)
- ▶ Office Hours
 - ▶ Weekly one hour
- ▶ Committees
 - ▶ Finance and Governance
 - ▶ Thursdays between 1:15-3:45 PM
 - ▶ Audit and Children Center
 - ▶ Twice a semester (around members schedules)

Eligibility

- ▶ Unit Load
 - ▶ Undergraduate student must be in 6 units per semester
 - ▶ Graduate students must be in 3 units per semester
- ▶ Candidate Residency
 - ▶ Must have been enrolled at CSUF for one semester
- ▶ Grade Point Average
 - ▶ Cumulative 2.5 GPA
 - ▶ Semesterly 2.0 GPA
- ▶ Must have a Major or Minor in the college
 - ▶ Exception: the College of Education