

ASI President and Executive Vice President

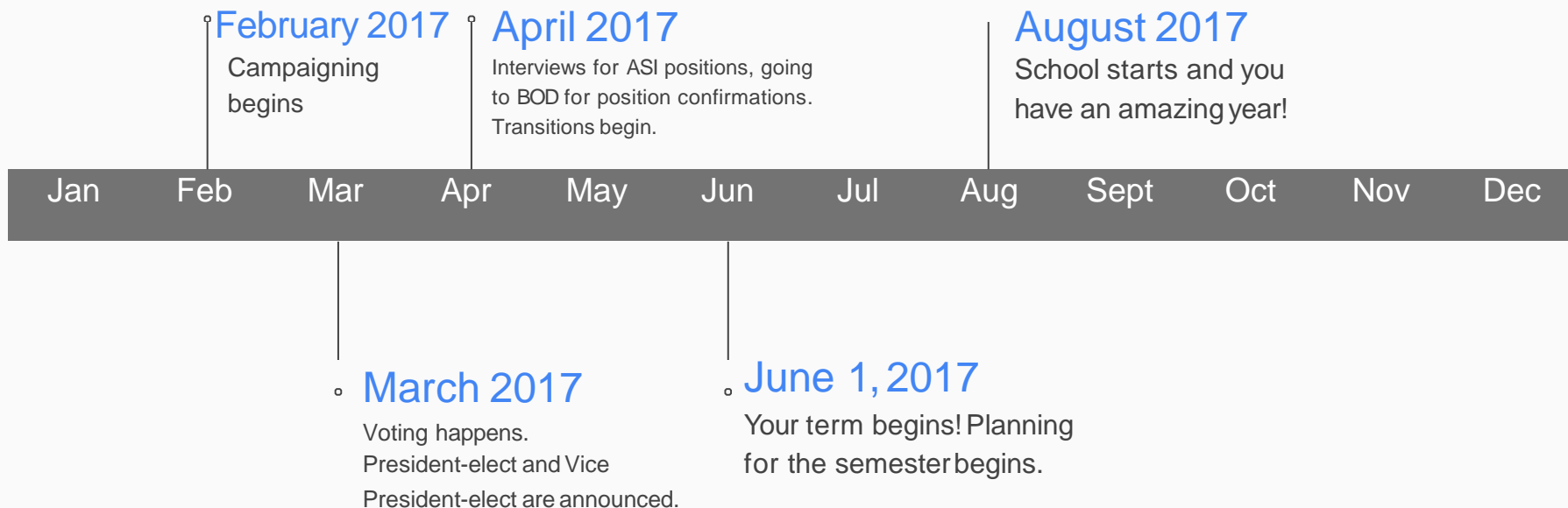
Mission statement:

The Associated Students, CSUF, Inc. (ASI) is the recognized student government at California State University, Fullerton, advocating student interests on-campus and in local, state and national forums. The ASI strives to develop relevant and quality-minded services, facilities, and experiences, which are responsive to members of the campus and surrounding communities.

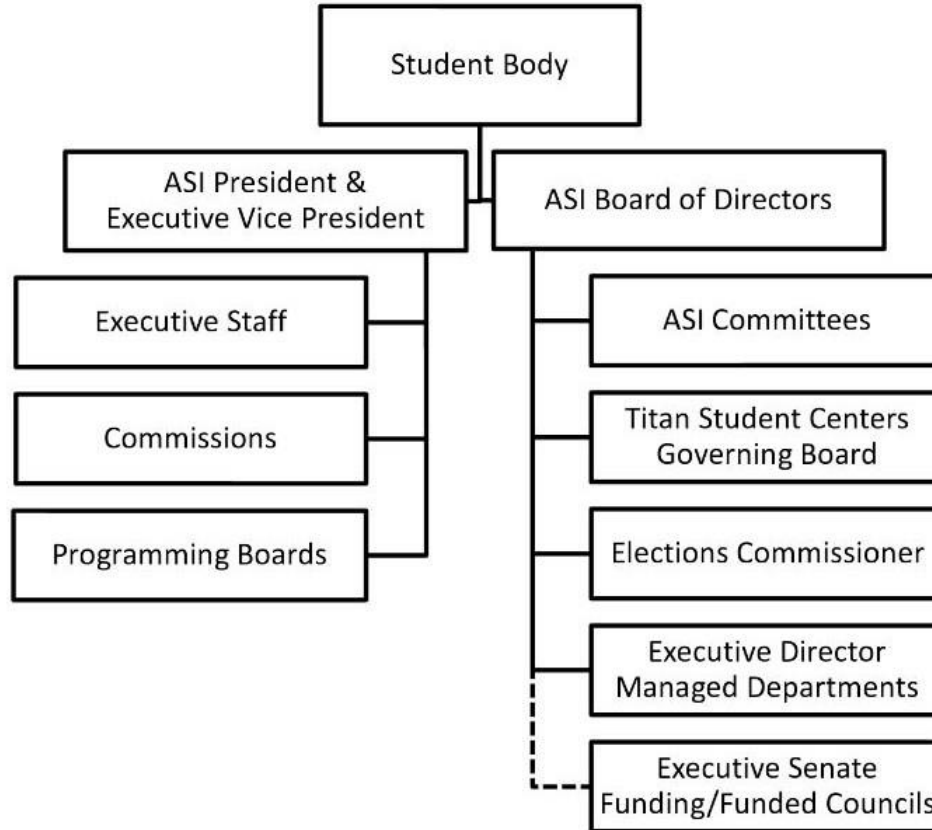
TITAN STUDENT UNION



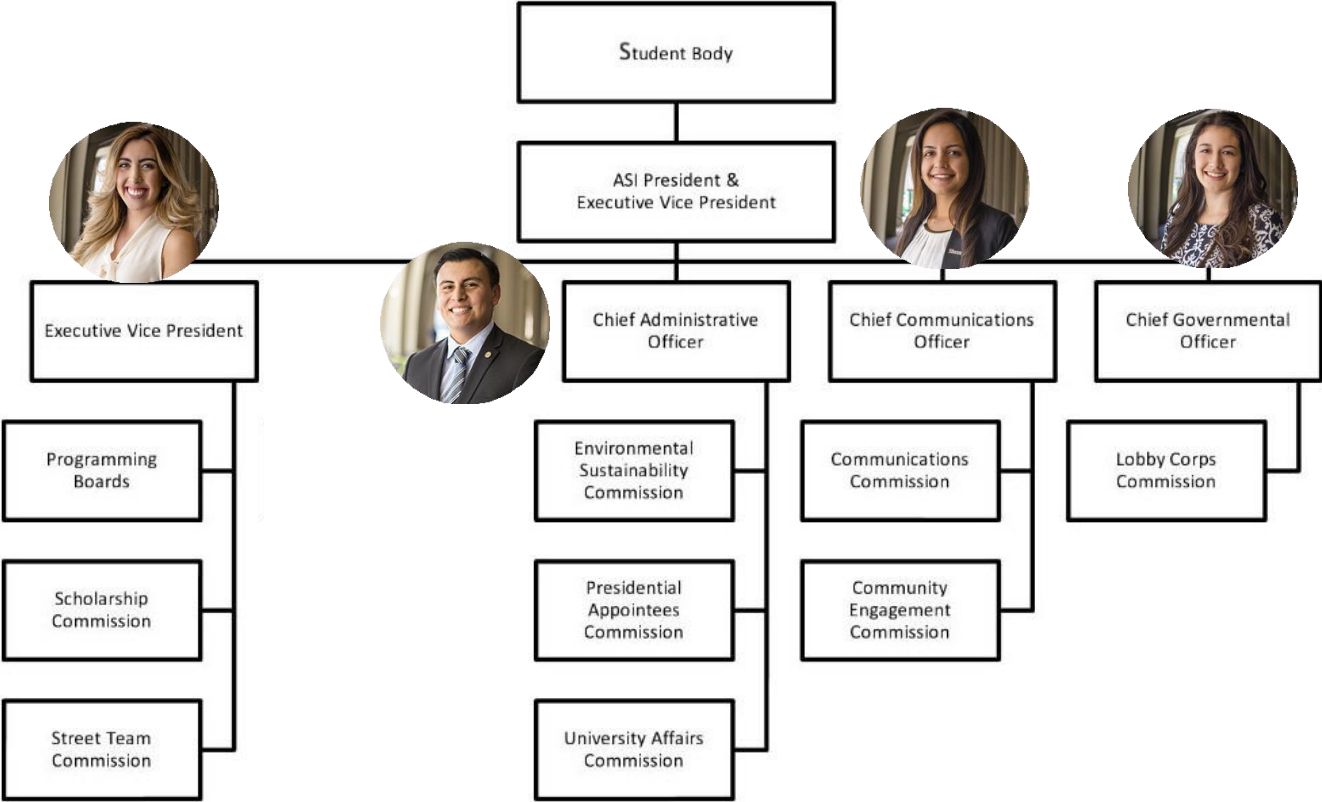
Timeline



ASI Structure



Executive Team



ASI President & CEO

The ASI President is also the Chief Executive Officer and acts as head of the ASI Government. They are the external leader of ASI and the representation for the student body on campus. They appoint and oversee the Executive Team, as well as other positions within ASI.

They sit on many university-wide committees and meetings and appoint students to also sit on these committees.

They also meet with many on campus individuals one-on-one and have the ability to advocate on behalf of all students on many different forums. This on campus advocacy is also paired with many trips to Sacramento and offices of local legislators.



ASI President Responsibilities

ASI Areas President Oversees:

- ❖ Executive Team
- ❖ Communications Team (CCO)
- ❖ Community Engagement Commission (CCO)
- ❖ Environmental Sustainability (CAO)
- ❖ Presidential Appointee Commission (CAO)
- ❖ Lobby Corps (CGO)
- ❖ Help with pro-staff



ASI President Responsibilities

University-Wide Committees I Sit On:

- ❖ President's Advisory Board (PAB)
- ❖ Auxiliary Services Corporation (ASC)
- ❖ Co-chair for Student Fee Advisory Committee (SFAC) and Student Success Initiative Fee Advisory Committee (SSIFAC)
- ❖ Alumni Board Association
- ❖ Cal State Fullerton Philanthropic Board
- ❖ Academic Senate standing committees
- ❖ IT Advisory Committee

Other Responsibilities:

- ❖ Monthly CSSA meetings
- ❖ Advocacy trips to Long Beach and Sacramento
- ❖ One-on-one meetings with President Garcia, Vice Presidents (6), Deans, Director of Athletics, Chief of Police, etc.
- ❖ Titan Student Centers Governing Board (ASI)

ASI Executive Vice President

The ASI President and Executive Vice President, along with the Executive Officers, represent student's needs and interest to the Cal State Fullerton administration, faculty & staff, and campus community.

The EVP in particular manages the day-to-day proceedings of student programming boards, sits on multiple committees, and acts as a resource for organizations and clubs on campus. The EVP works very closely with the President to ensure that ASI is always improving and initiating projects that benefit the students as much as possible.

Executive Vice President Responsibilities

ASI Areas EVP Oversees:

- ❖ Street Team
- ❖ Titan Tusk Force
- ❖ ASI Productions
- ❖ Scholarships Commission
- ❖ Association of InterCulturalAwareness (AICA)

ASI Meetings EVP Chairs

- ❖ Executive Senate
- ❖ Research Grant Committee
- ❖ Student Leadership Reception

Executive Vice President Responsibilities

Ex-Officio member of every ASI Committee

- ❖ Scholarships Committee
- ❖ Finance Committee
- ❖ Governance
- ❖ Children's Center

Other Responsibilities:

- ❖ Search Committees when needed
- ❖ One-on-one meetings with President Garcia, Vice Presidents (6), Deans, Director of Athletics, Chief of Police, etc.
- ❖ Board of Directors Meetings
- ❖ Executive Team Meetings
- ❖ One on ones with programming
- ❖ Can sit on any other meetings you'd like:
 - TSCGB
 - SFAC

Questions?