



TSC GOVERNING BOARD

Email: tscvcmarketing@fullerton.edu

Are you interested in
_____?

Food Service

Operating Hours

Updating fitness equipment

Office space allocation



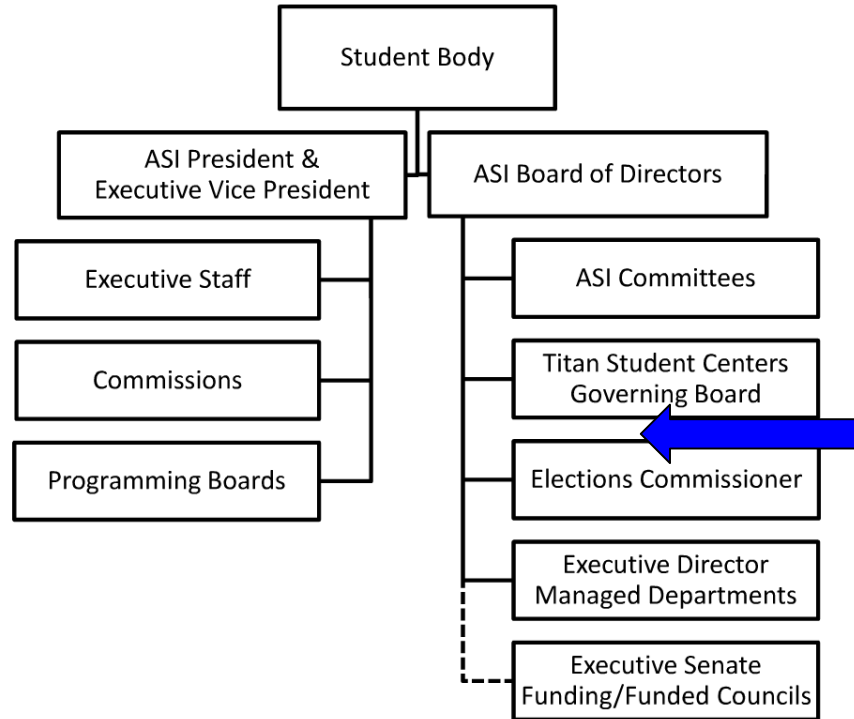
FACILITIES

Mission Statement

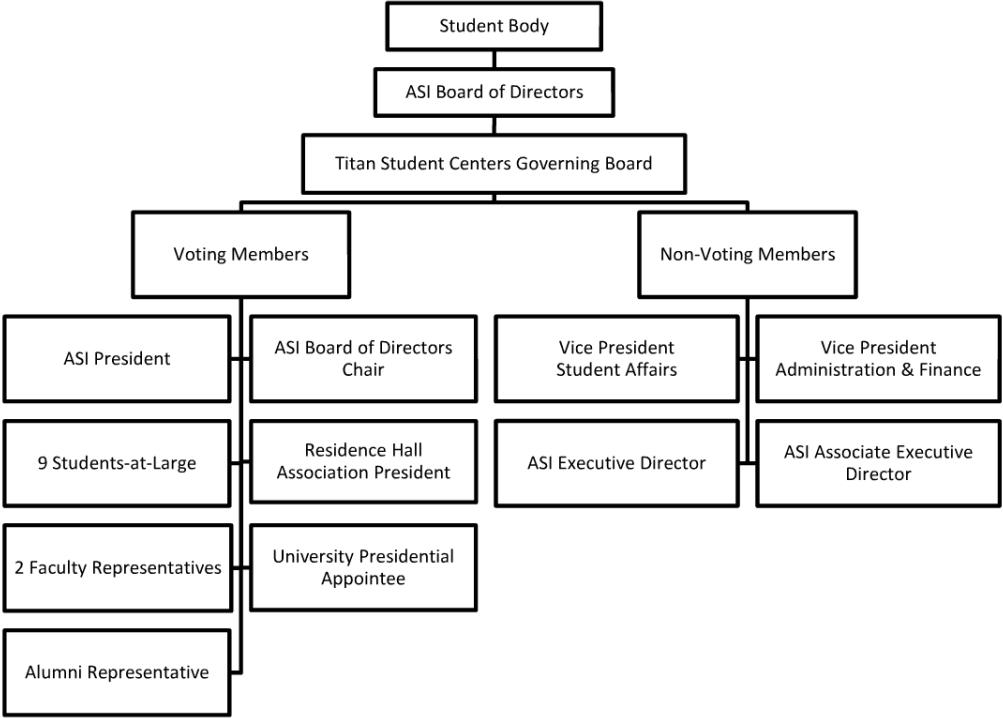
The Titan Student Centers, a unit of the Associated Students, CSUF, Inc., serve as primary gathering places on the campus of California State University, Fullerton. The Titan Student Centers **strive to develop relevant and quality-minded services, facilities and experiences**, which are responsive to members of the campus and surrounding communities.

The purpose of this Governing Board is to **establish policies which will assure that the Titan Student Centers are a unifying force between students, faculty, and staff**; campus centers for social, cultural, fitness, recreational and intellectual activities and services; places to provide further opportunities to broaden and strengthen interpersonal relationships and self-enhancement within a large urban university; and to provide experience in self-government and civic responsibility.

ASI Structure



Titan Student Centers Governing Board Composition



Why We Were Created

TSCGB was created by the Board of Directors to manage the growing facilities and oversee operational policies with the help of ASI staff.

“The Associated Students Inc. Board of Directors establishes the the Titan Student Centers Governing Board in order to develop and adopt operating policy to govern the operation of the facilities and programs of the Titan Student Centers.”

Committees

Facilities & Operations

Oversight of the overall operational needs of the Titan Student Centers: budget, hours of operation, policy, planning, future projects and allocation of space

Marketing & Outreach

Oversight of the overall marketing and outreach of the Titan Student Centers: feedback on print material, website design, marketing campaigns, outreach initiatives

Programs & Services

Oversight of the overall programs and services within the Titan Student Centers: art acquisition, food services, development and evaluation of programs

**You've got
questions....we've got
answers**
